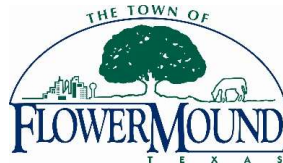




AGENDA

- THE FLOWER MOUND PRESERVATION GROUP
- CROSS TIMBERS
- CONCERNED AREAS
- DEVELOPMENT TIMELINE SINCE 2002
- CURRENT DEVELOPMENT PROJECTS IN CTCDD
- FUTURE DEVELOPMENT PROJECTS IN CTCDD



THE FLOWER MOUND PRESERVATION GROUP

We are a fast growing group that's formed by like-minded individuals who reside in or near the Town of Flower Mound, Texas. Our goal is to ensure real estate developers are developing sensibly and responsibly, whether it is preserving, conserving, restoring natural and historical resources, respecting the cultural heritage of surrounding areas, or employing methods of sustainable design.

REFERENCES: IMAGE AND LOGO FROM TOWN OF FLOWER MOUND WEBSITE

CROSS TIMBERS

The term Cross Timbers, also known as Ecoregion 29, Central Oklahoma/Texas Plains, is used to describe a strip of land in the United States that runs from southeastern Kansas across Central Oklahoma to Central Texas.[1] Made up of a mix of prairie, savanna, and woodland,[2][3] it forms part of the boundary between the more heavily forested eastern country and the almost treeless Great Plains,[2][3][4] and also marks the western habitat limit of many mammals and insects.[2]

REFERENCES

- [1] Level III Ecoregions of the Conterminous United States (Map). Environmental Protection Agency. Archived from the original on 2008-04-08. Retrieved 2008-09-24.
- [2] Ecoregions of Oklahoma (PDF) (Map). Environmental Protection Agency. Retrieved 2008-09-24.
- [3] Ecoregions of Texas (PDF) (Map). Environmental Protection Agency. Retrieved 2008-09-24.
- [4] Ecoregions of Nebraska and Kansas (PDF) (Map). Environmental Protection Agency. Retrieved 2008-09-24.

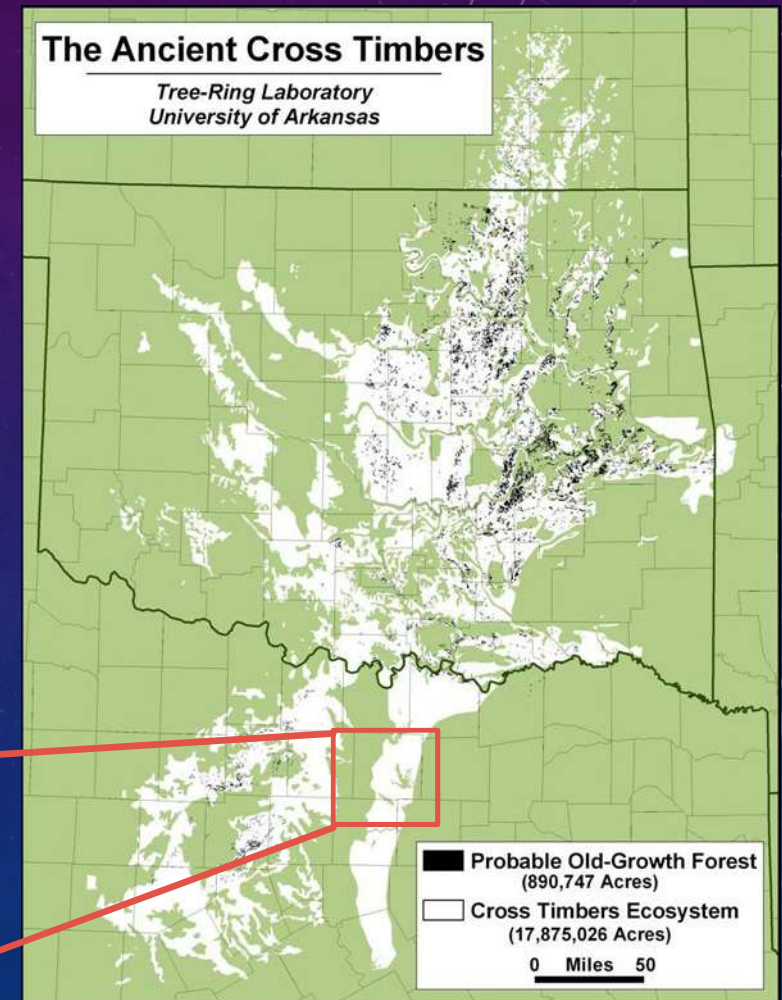
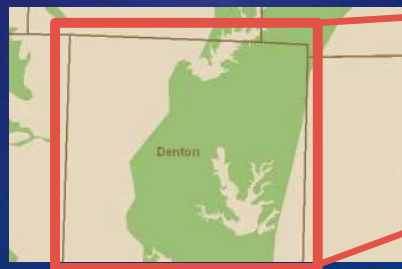
CROSS TIMBERS

Our failure to understand the ancient Cross Timbers is contributing to the ongoing destruction and fragmentation of this ecosystem, which is a major threat to regional biodiversity, water quality, and recreational values.

Large tracts of ancient deciduous forest still grace the ridges and rugged escarpments of southeast Kansas, Oklahoma, western Arkansas, and central Texas. These interesting woodlands are dominated by centuries-old post oak (*Quercus stellata*) and are part of the Cross Timbers ecosystem. The Cross Timbers are a complex mosaic of upland forest, savanna, and glade that form the broad ecotone between the eastern deciduous forests and the grasslands of the southern Great Plains.

REFERENCES

The Ancient Cross Timbers: Tree-Ring Laboratory, University of Arkansas (<http://www.uark.edu/misc/xtimber/map/>)

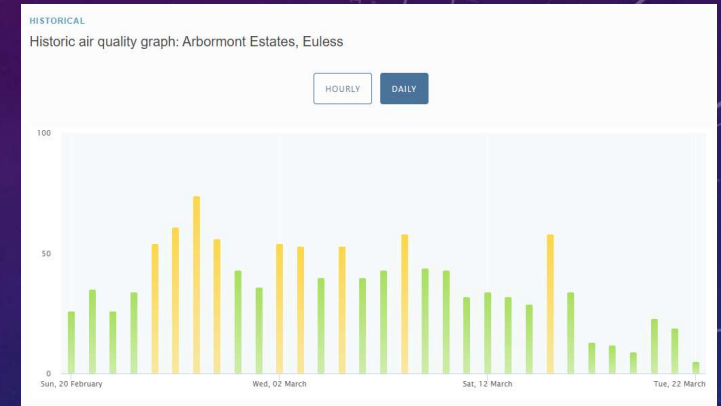


AIR QUALITY (FEBRUARY 20 – MARCH 20)

- FLOWER MOUND
- LEWISVILLE
- SOUTHLAKE
- EULESS



Flower Mound, TX



Euless, TX

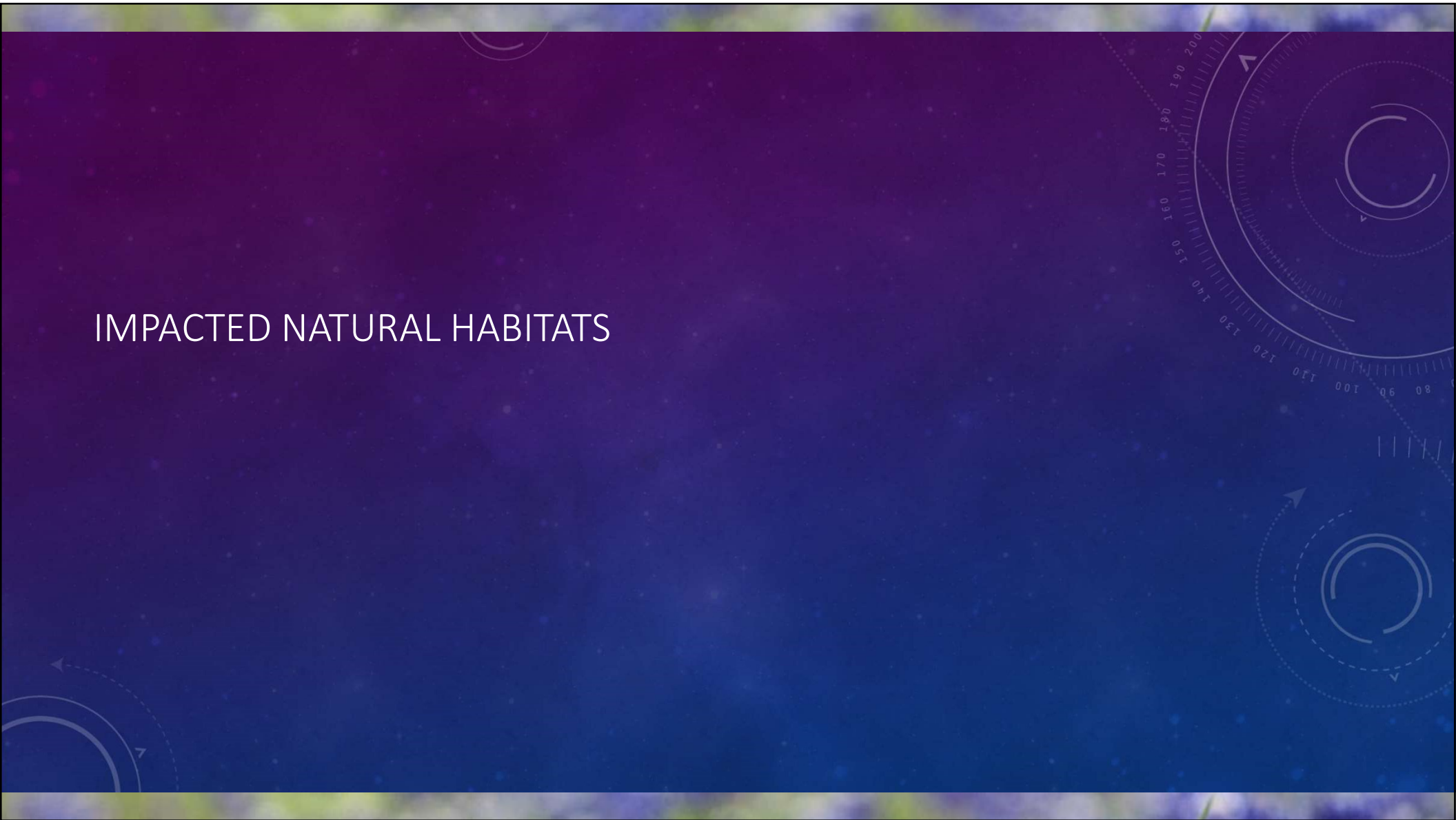


Lewisville, TX



Southlake, TX

IMPACTED NATURAL HABITATS



BIRDS

Plegadis chihi

Haliaeetus leucocephalus

Charadrius melodus

Laterallus jamaicensis

Grus americana

Calidris canutus rufa

Charadrius montanus

Leucophaeus pipixcan

Sternula antillarum
athalassos

Athene cunicularia
hypugaea

Calcarius ornatus

white-faced ibis

bald eagle

piping plover

Black Rail

whooping crane

Rufa Red Knot

mountain plover

Franklin's gull

interior least tern

western burrowing owl

Chestnut-collared Longspur



MAMMALS

Puma concolor

Conepatus leuconotus

Spilogale putorius

Mustela frenata

Sylvilagus aquaticus

Nyctinomops macrotis

Lasiurus cinereus

Lasiurus borealis

Ondatra zibethicus

Cynomys ludovicianus

Eptesicus fuscus

Perimyotis subflavus

mountain lion

western hog-nosed skunk

eastern spotted skunk

long-tailed weasel

swamp rabbit

big free-tailed bat

hoary bat

eastern red bat

Muskrat

black-tailed prairie dog

big brown bat

tricolored bat



REPTILES

Deirochelys	western chicken turtle
reticularia miaria	
Thamnophis sirtalis	common garter snake
Crotalus horridus	timber (canebrake) rattlesnake
Thamnophis sirtalis	Texas garter snake
annectens	
Crotalus viridis	western rattlesnake
Ophisaurus	slender glass lizard
attenuatus	
Apalone mutica	smooth softshell
Terrapene ornata	western box turtle
Terrapene carolina	eastern box turtle
Phrynosoma	Texas horned lizard
cornutum	
Plestiodon	Prairie Skink
septentrionalis	



INSECTS

Bombus pensylvanicus
American bumblebee



Arethaea ambulator
No accepted common name

PLANTS

Echinacea atrorubens
Topeka purple-coneflower



Crataegus viridis var. *glabriuscula*
Sutherland hawthorn



Yucca necopina
Glen Rose yucca



AMPHIBIANS

Anaxyrus woodhousii
Woodhouse's toad



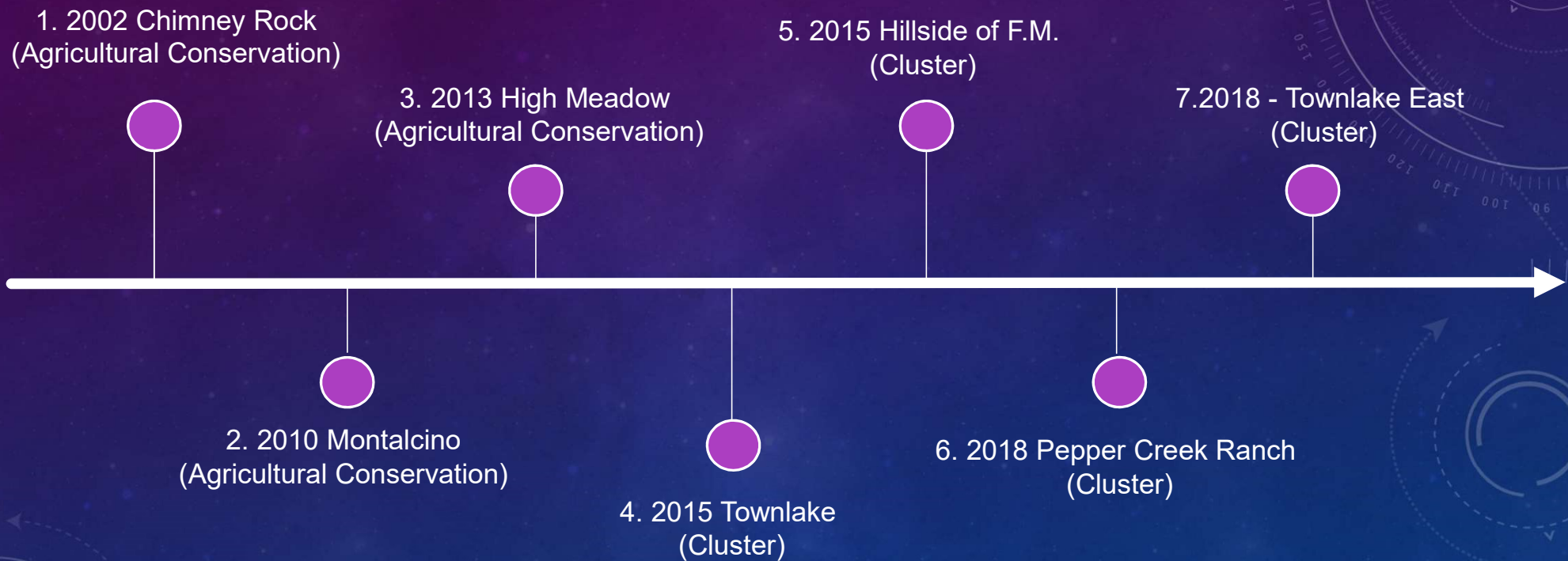
Pseudacris streckeri
Strecker's chorus frog





DEVELOPMENT PROJECTS SINCE 2002

DEVELOPMENT PROJECTS SINCE 2002



CROSS TIMBERS CONSERVATION DEVELOPMENT DISTRICTS

1. Agricultural Development (min. lot size 2 acres)

- This type of development is currently entitled
- Developers can build by right following the agricultural development standards

2. Agricultural Conservation Development (min. lot size - 1 acre)

- This type of development is not entitled.
- Requires approval from town officials (staff level, planning commission, town council).
- Requires public hearings/meetings.
- Minimum open space/conserved land - 50%

3. Cluster Development (min. lot size - 0.5 acre)

- This type of development is not entitled.
- Requires approval from town officials (staff level, planning commission, town council).
- Requires public hearings/meetings.
- Minimum open space/conserved land - 50%

SUMMARY

1. Cross Timbers, also known as Ecoregion 29, is a home for many natural habitats recognized by environmental protection agency
2. Our failure to understand the ancient Cross Timbers is contributing to the ongoing destruction and fragmentation of this ecosystem, which is a major threat to regional biodiversity, water quality, and recreational values.
3. Ever since the Cluster Development option was introduced and included as part of the Master Plan's CTCDD development opportunity, there has not been a single Agricultural Development or Agricultural Conservation Development in the Town of Flower Mound.

NEXT STEPS

1. CURRENT DEVELOPMENT PROJECTS
2. PLANNING AND ZONING
 - REVISIT ORDINANCES FOR CLUSTER DEVELOPMENTS
3. ENVIRONMENTAL PROTECTION
 - TEXAS COMMISSION ON ENVIRONMENTAL QUALITY (TCEQ)
 - ENVIRONMENTAL PROTECTION AGENCY (EPA)
 - TEXAS PARKS AND WILDLIFE
 - CORPS OF ENGINEERS
 - TRINITY RIVER AUTHORITY

CURRENT PROJECTS WITHIN CTCDD

Name of Project: Cummings Ranch

Brief Description: Proposal for a Cluster Development in the CTCDD

Name of Project: Townlake Phase 5 & 6

Brief Description: Proposal for a Cluster Development in the CTCDD